

## MLR - ROD STYLE



### STANDARD FEATURES

- 50 to 1000mm STROKE
- OUTPUT - 5kOHM, 10kOHM (above 600mm)
- 4 PIN CONNECTOR
- LINEARITY +/-0.05%
- INFINITE RESOLUTION
- CONNECTOR - 4 PIN
- DISPLACEMENT SPEED - 10m/s MAX
- MECHANICAL LINKAGE - M6 THREAD ON ROD
- OPERATING TEMP - -30 to +100OC
- IP60 / IP65

### OPTIONS

- ROD END BEARING (01)
- LINK BALL (02)

### SPECIFICATIONS

LINEARITY	0.05%
MAX VOLTAGE	60V
PROTECTION	IP60/IP65
INSULATION RESISTANCE	>500V
MAX DISPLACE SPEED	10m/s
LIFE	>100x10 <sup>6</sup> Cycles
CASE MATERIAL	Anodized Aluminium, Nylon
CONTROL ROD	Stainless Steel
RESISTANCE ELEMENT	Conductive Plastic
MECH MOUNTING	M4, Variable Length Bracket

### MECHANICAL/ELECTRICAL DATA

MODEL		50	75	100	130	150	175	200	225	250	275	300	350	375	400	425	450	500	550	600	650	700	750	800	900	1000	
TOTAL ELECTRICAL TRAVEL	mm	53	78	103	133	153	178	204	229	254	279	304	354	380	406	432	457	508	558	609	659	710	762	812	914	1017	
ACTIVE ELECTRICAL TRAVEL	mm	51	76	101	131	151	176	202	227	252	277	302	352	378	404	430	455	506	556	607	657	708	760	810	912	1015	
RESISTANCE .20%	k	5	5	5	5	5	5	5	5	5	5	5	5	5	5	5	5	5	5	5	10	10	10	10	10	10	
INDEPENDENT LINEARITY	%	0.05	0.05	0.05	0.05	0.05	0.05	0.05	0.05	0.05	0.05	0.05	0.05	0.05	0.05	0.05	0.05	0.05	0.05	0.05	0.05	0.05	0.05	0.05	0.05	0.05	
MECHANICAL TRAVEL	mm	59	84	109	139	159	184	210	235	260	285	310	360	386	412	437	463	518	568	619	669	720	772	822	924	1027	
RESOLUTION		Infinite																									
RECOMMENDED CURSOR CURRENT	A	<1																									
TEMPERATURE RANGE	°C	-30°C to 100°C (-22°F to 212°F)																									
DIMENSIONS (A)	mm	114	139	164	195	215	241	266	291	316	341	367	417	444	469	494	520	570	623	672	726	776	825	879	977	1086	

### MLR - ORDER CODE

**MLR-XXX - X - X**

**LENGTH (mm)**      **SEAL**                      **OPTION**

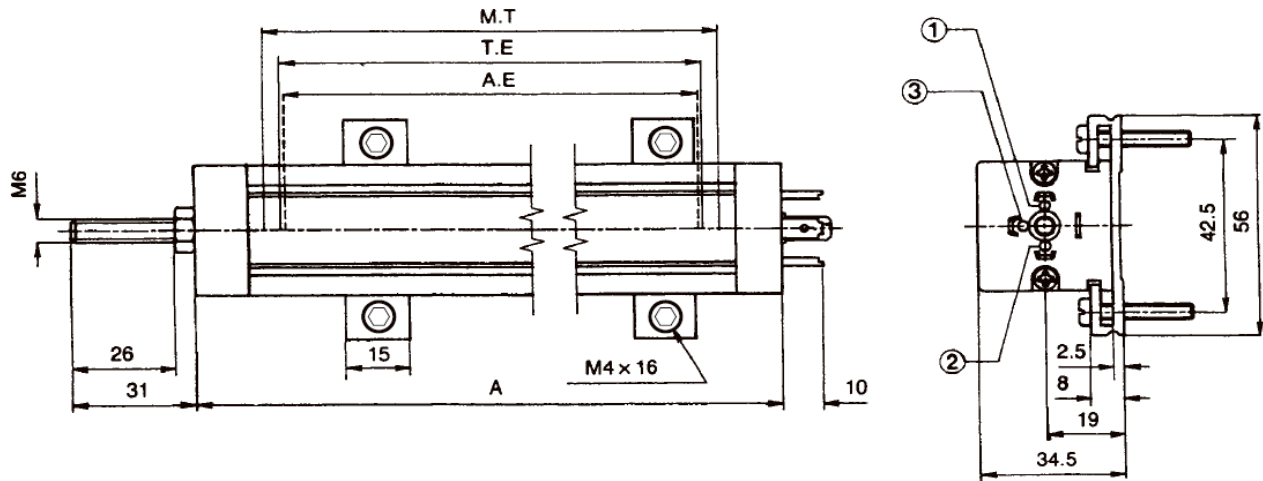
See Table Above <blank> - IP60      <blank> - NONE

                                 P - IP65                              1 - BALL JOINT

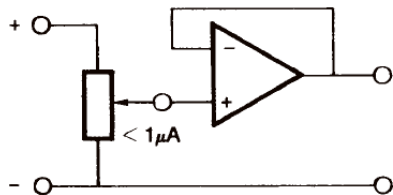
                                    2 - COUPLING JOINT

## MLR - ROD STYLE

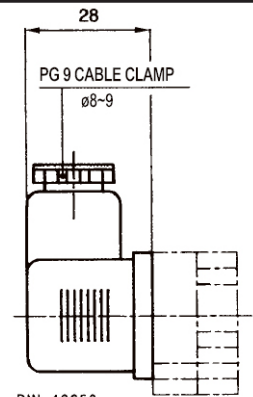
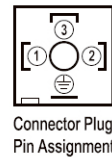
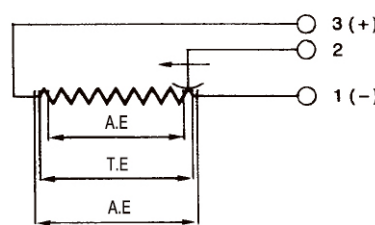
### DIMENSIONS



### ELECTRICAL



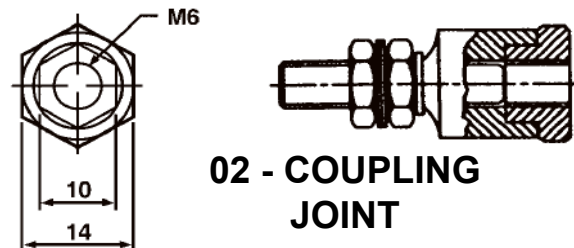
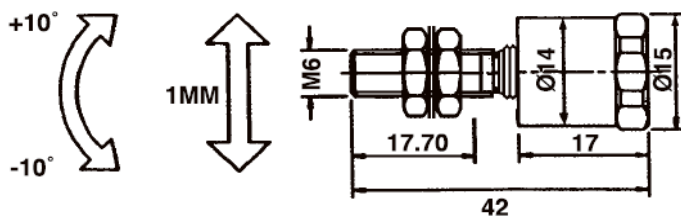
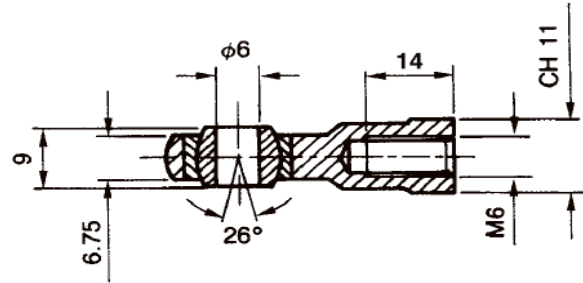
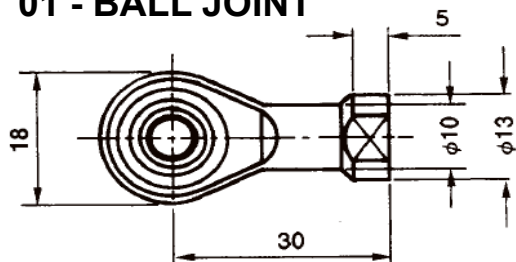
The published technical data are applicable only when the transducer is used correctly, and in accordance with the user manual/instructions. The MLR linear Position transducers must be used as voltage dividers with a maximum current in the wiper contact of  $1\mu A$ ; should the system require more current, further circuitry will be required.



DIN 43650  
IP65-ISO4400

### OPTIONS

#### 01 - BALL JOINT



#### 02 - COUPLING JOINT